



Artillery in support of the Desert Mounted Corps, 1917

Dr Jean Bou

Strategic and Defence Studies Centre, ANU

Scope

- Contexts
 - Cavalry ops
 - EEF organisation
 - DMC organisation
 - The fire support system
 - Artillery equipment
- Beersheba



800580

AUSTRALIAN WAR MEMORIAL

P00228.028

Contexts: mounted rifles, cavalry and mounted infantry

Key points:

The light horse (and NZMR) were mounted rifles, that is form of abbreviated cavalry.

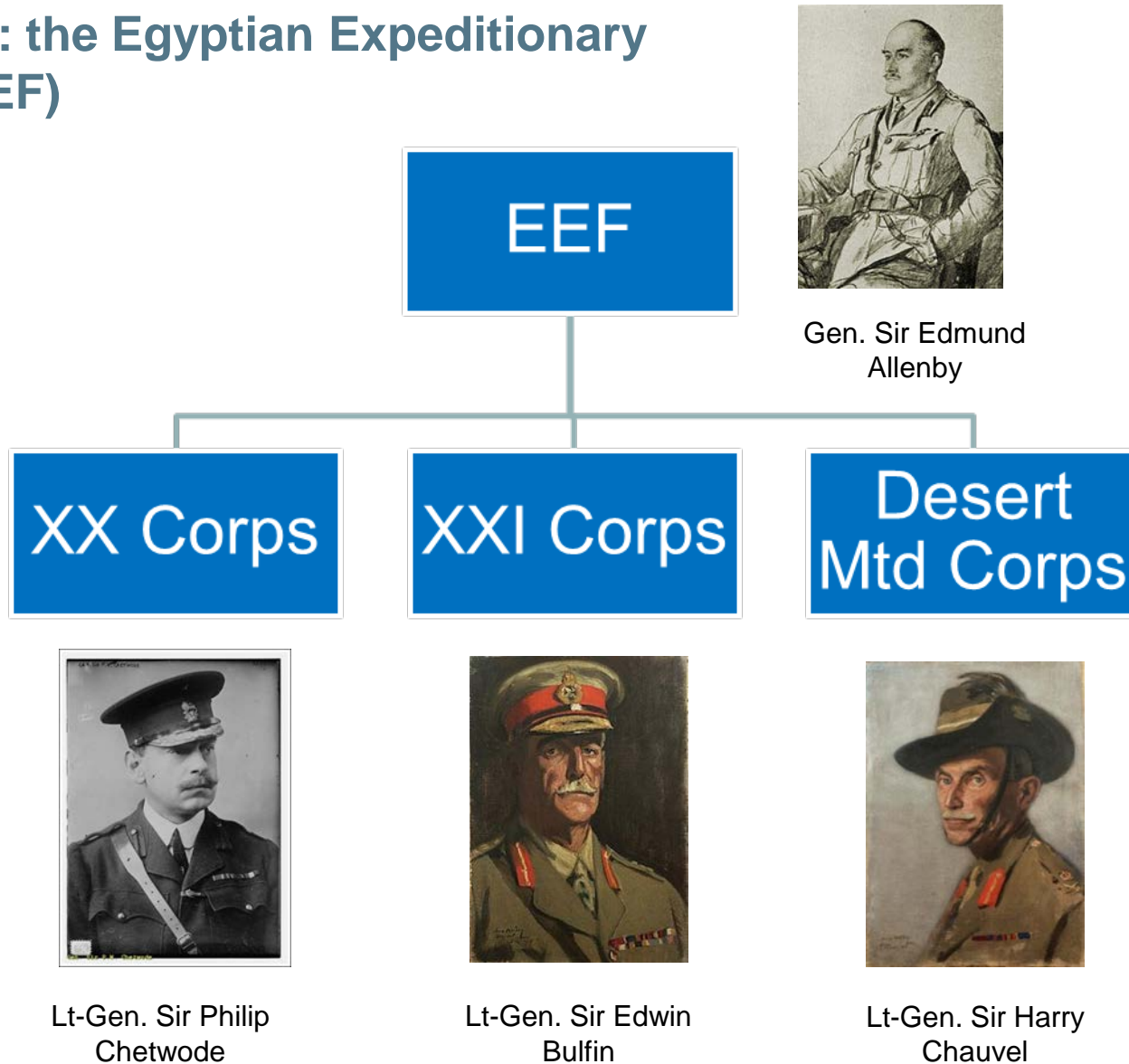
This is a discussion about supporting cavalry operations in a combined all-arms environment.



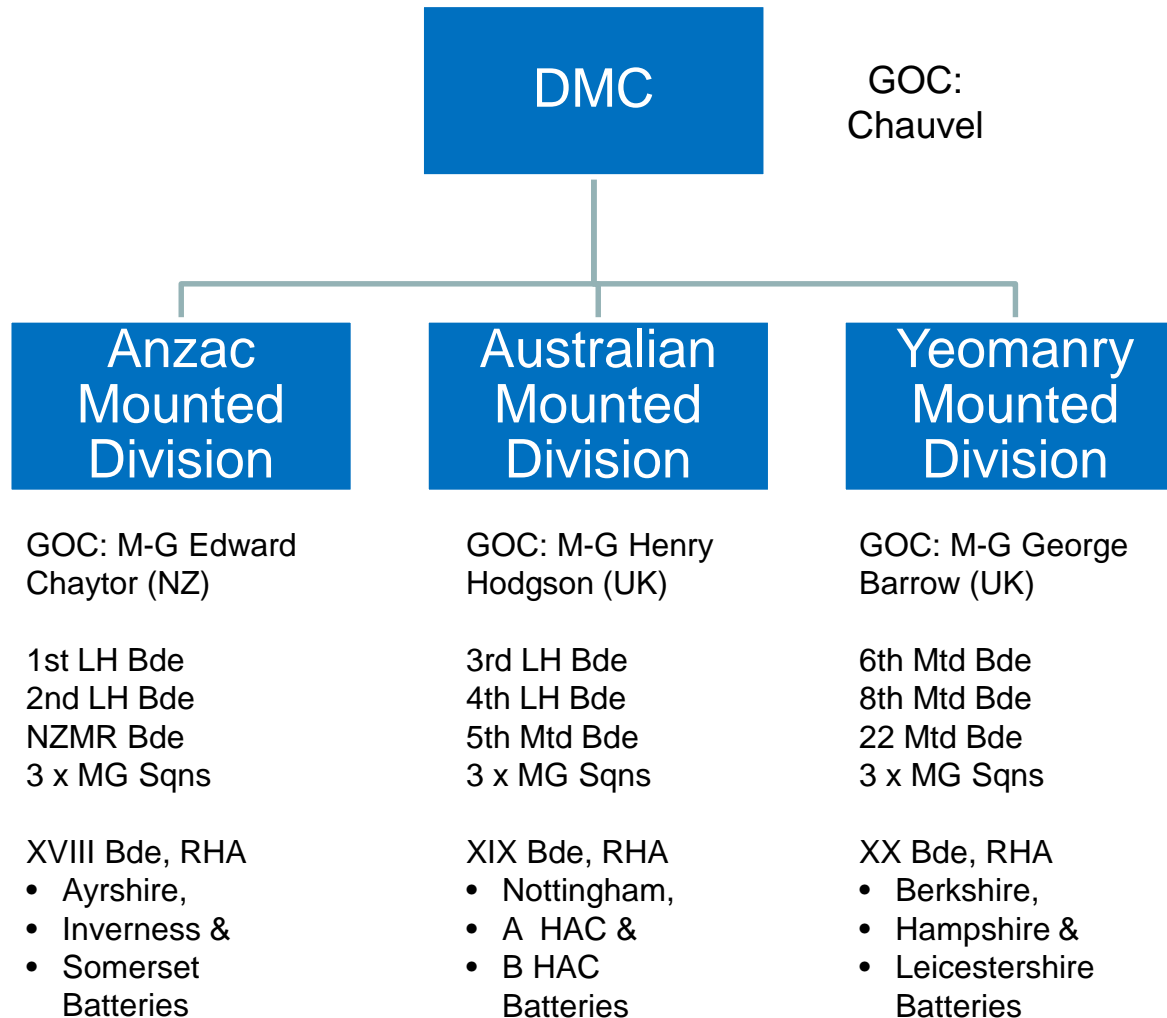
AUSTRALIAN WAR MEMORIAL

ART11387

Contexts: the Egyptian Expeditionary Force (EEF)



Contexts: Desert Mounted Corps, Jul-Dec. 1917



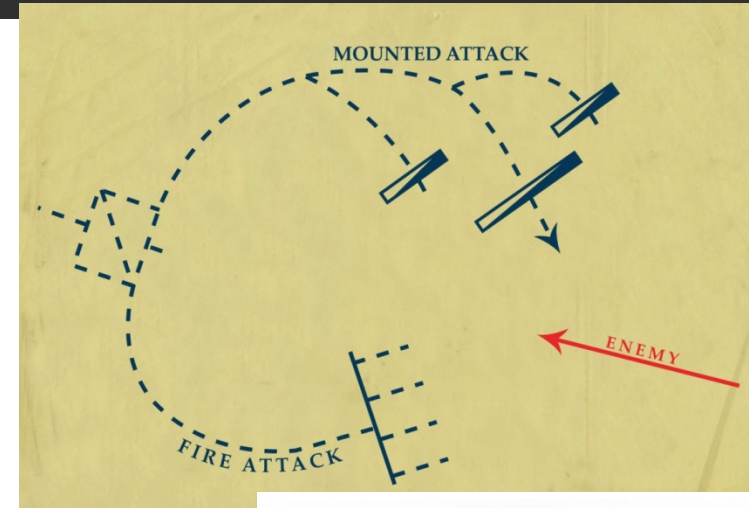
Contexts: cavalry tactics & fire support 'system'

Cavalry tactics

- Fire and movement, flanking an envelopment by mounted men
- Maximise rifle firepower for quick resolution
- Break off unfavourable engagements & use horses to manoeuvre
- Limited by establishments & need for horse holders
- Limitations on generation of firepower
- Limited capacity to seize & hold ground

Fire support

- Hotchkiss gun
 - 1 per troop = 12 per regiment (troop weapon until 1918, thereafter changes)
- MG sqns
 - 12 x Vickers = 3 x sections of 4 guns)
- Horse artillery (RHA) batteries
 - Batteries of 4 guns
 - Battery ammunition columns



Contexts: equipment, 18- or 13-pounders?

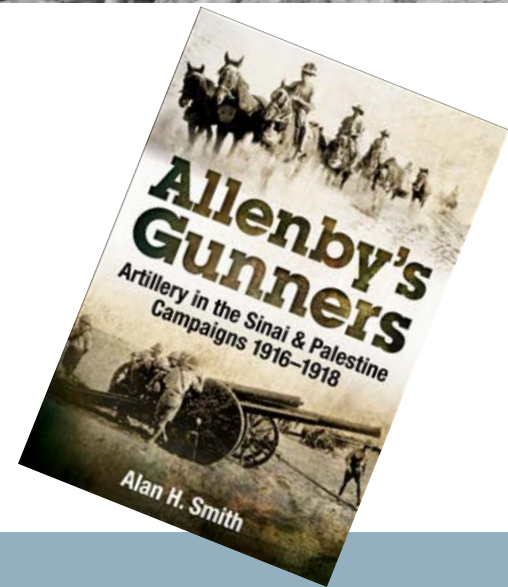


AUSTRALIAN WAR MEMORIAL

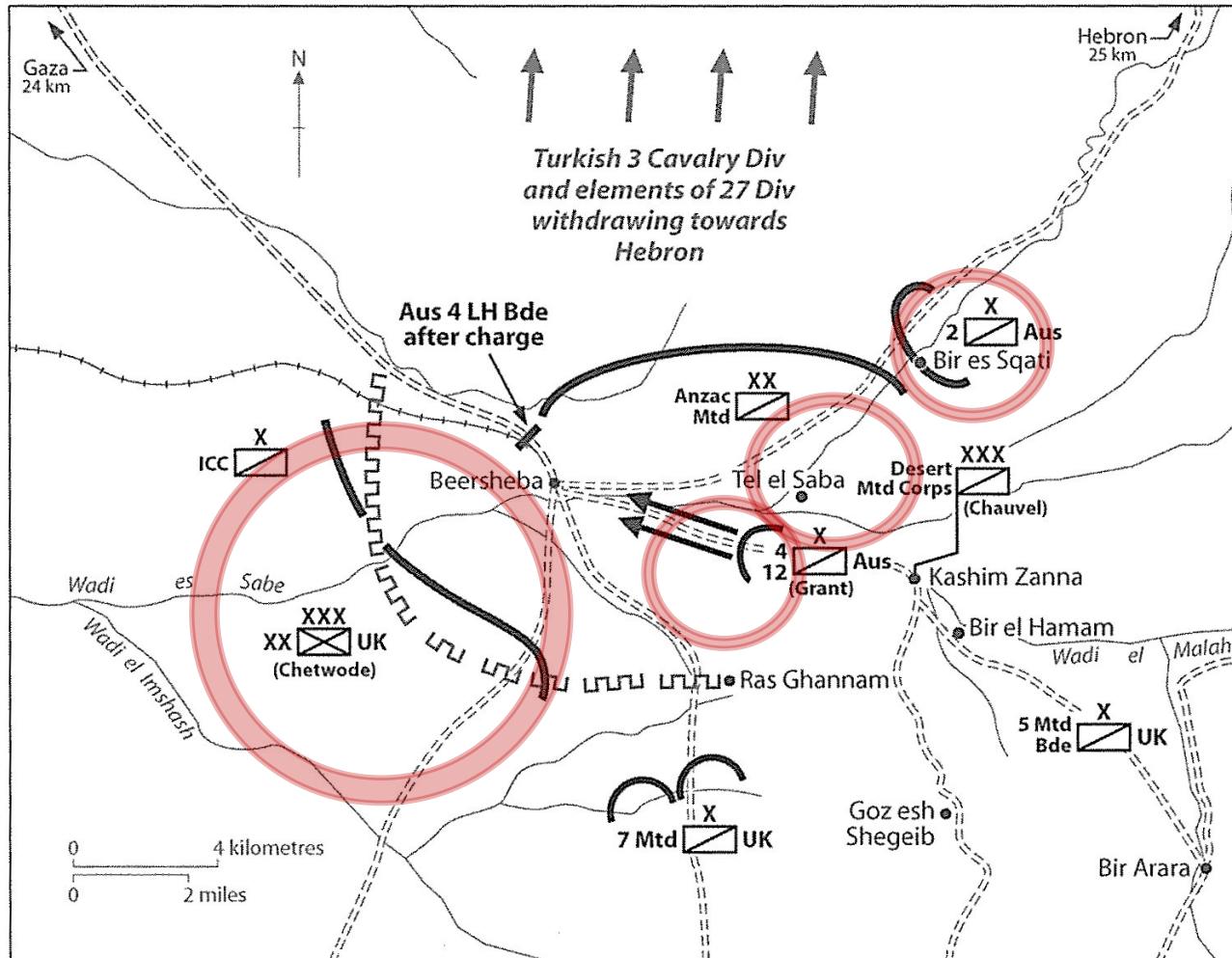
J01066



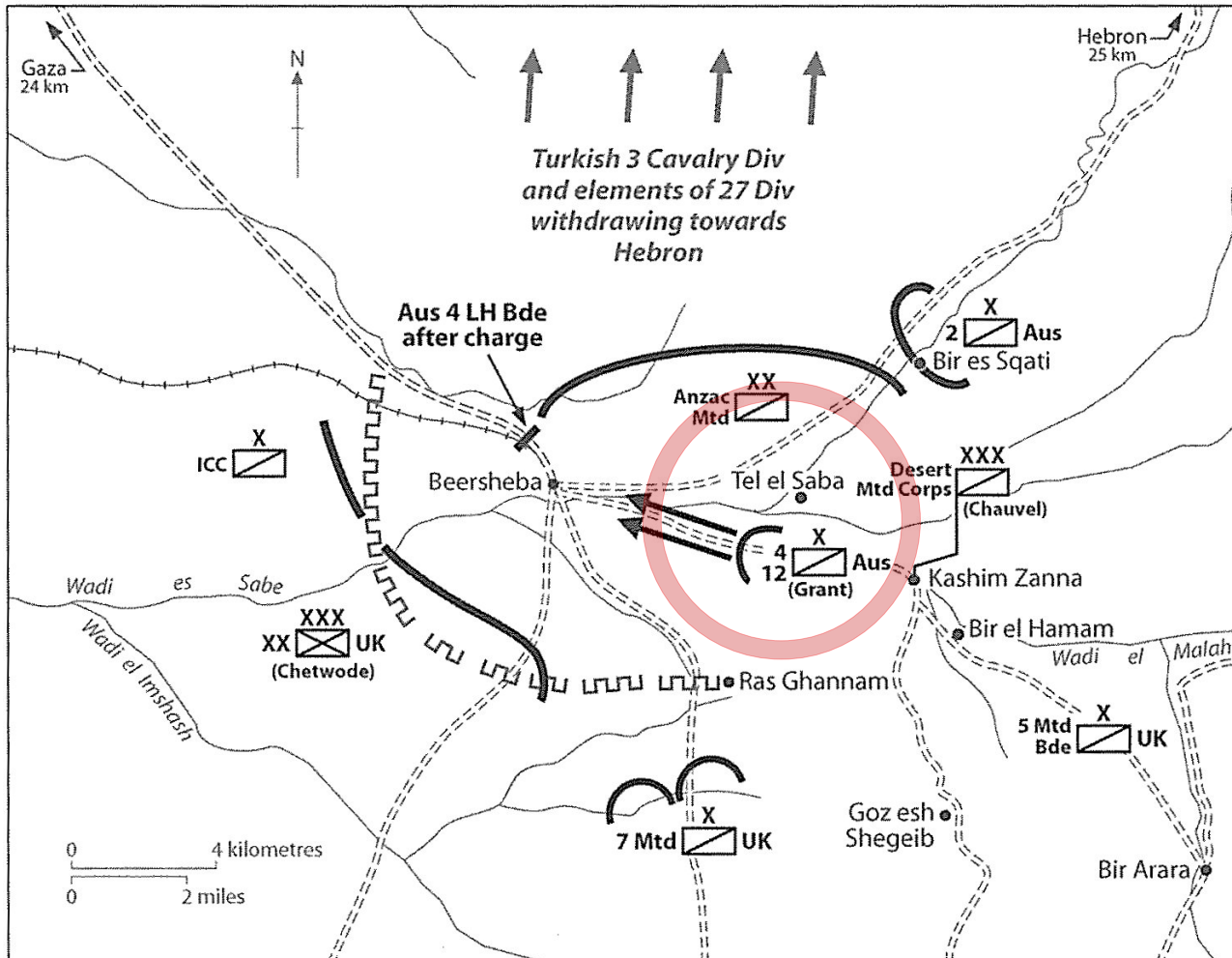
A bit of both it seems – depends on battery and time and place.



Beersheba



Beersheba

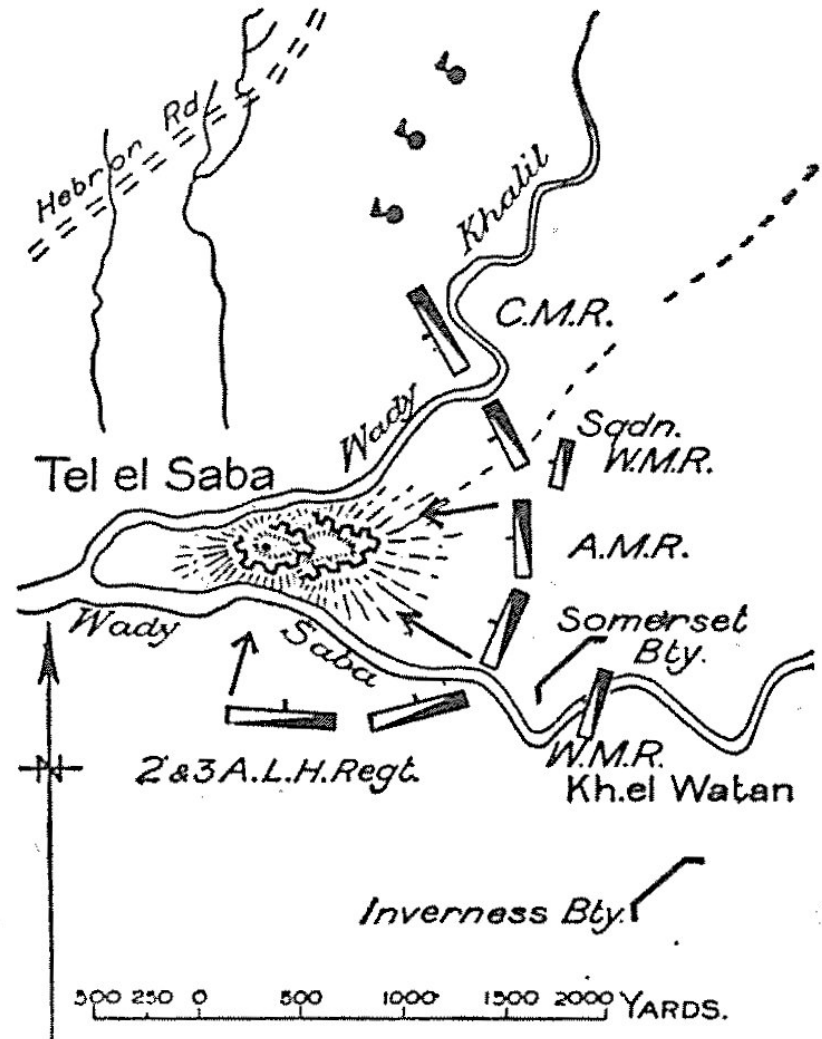


Tel el Saba



AUSTRALIAN WAR MEMORIAL

803066



Charge and general advance

